



THE ROLE OF LUSC IN DRIVING THE VISION, MISSION, AND CORE VALUES OF LANDMARK UNIVERSITY TOWARDS STUDENTS' EMBRACEMENT OF LMU CULTURE

Induction of Landmark University Student Council 2021

Prof. Charity O. Aremu

Vice-Chancellor

18th November, 2021.





OUTLINES

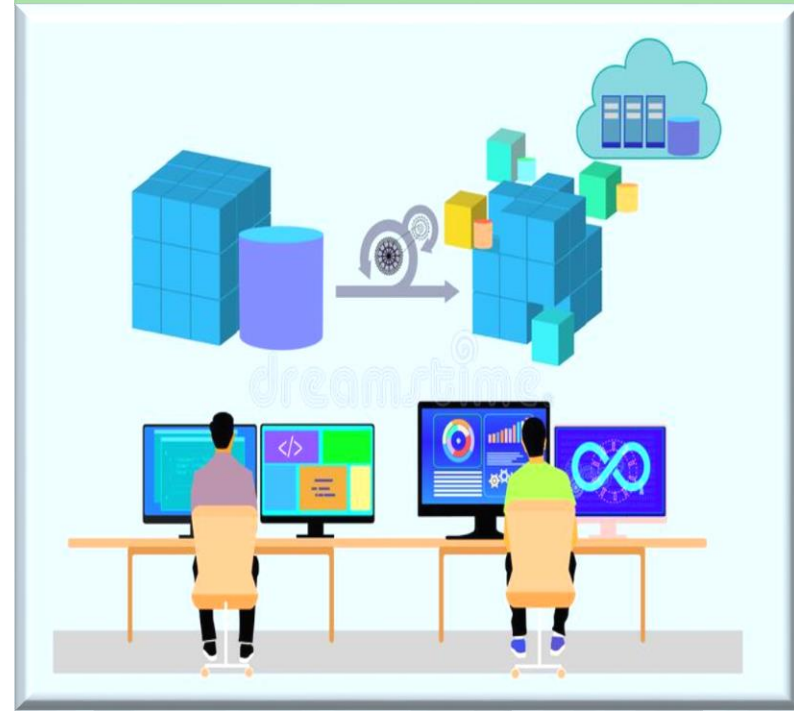


- ❖ Organizational culture
- ❖ Definition of Terms
- ❖ Student Council in Landmark University
- ❖ The Role Of LUSC In Driving The Vision, Mission, And Core Values Of Landmark University Towards Students' Embracement Of LMU Culture
- ❖ Conclusion.



❑ Organizational Culture

❖ Organizational culture defines a fundamental belief of an organization which is unique to, and formed its operating systems in both social and psychological environments. Therefore, Landmark University cultures are our beliefs and unique operating systems put in place to achieve our day to day activities





❑ Vision is the Capacity to see ahead




❑ Mission is knowing what to do or how to get there. It is the summary of an organizational vision and core value.

Definition of Terms




OUR OPERATIONAL COMPASS



Landmark University


OUR VISION



To be a leading world class university, by spearheading an agrarian revolution on the African continent through the exploration of hidden treasures in the mother-earth thereby restoring the dignity of the black race.


..Breaking New Grounds

Propels



Landmark University

OUR MISSION



- Raising a generation of solution providers through a qualitative and life-applicable training system that focuses on value and creative knowledge
- Raising a new generation of leaders through a broad-based qualitative education built on sound biblical principles culminating in the birth of breadwinners, job creators and world changers
- Raising an army of reformers who shall redeem the battered image of the black race and restore her lost glory as these well-equipped graduates begin to build the old waste, repair the wasted cities and raise the desolation of many generations as pathfinders.

..Breaking New Grounds

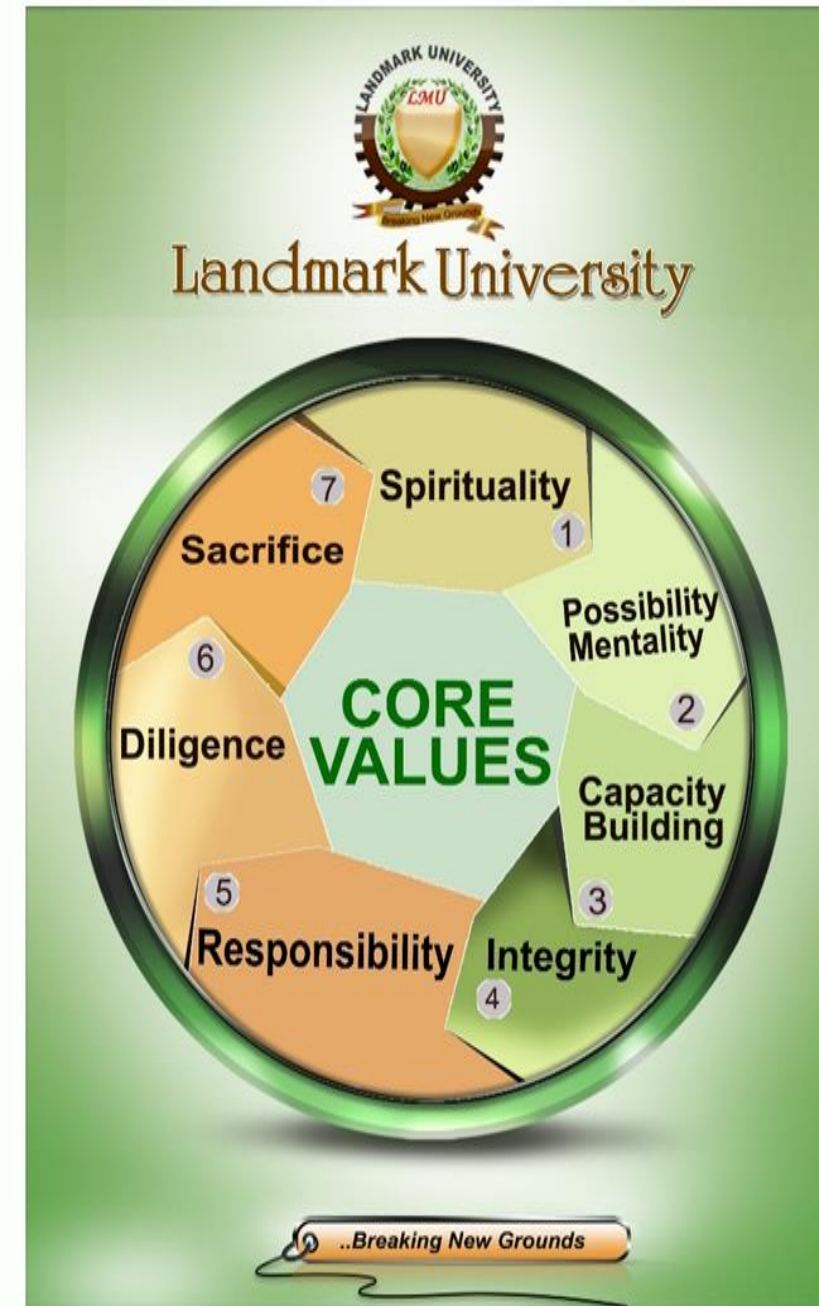
Intentional



❑ **The Core Value:** This is a **central principal or belief** of an organization

Landmark University Core Values were solely drafted by the Chancellor of Landmark University in the person of Dr. David Oyedepo to guide our daily activities and dispositions. They are to be sustained by the University Community. They are:

1. Spirituality = our operational ethos that defines our right standing with God



Guides

❖ **Possibility Mentality**=Ability to provide a means even in the midst of nothing

❖ **Capacity Building** = growing and adding value to self. It is all about developing skills and competencies at an individual level

❖ **Integrity**=your value when no one is watching (100%)



❖ **Responsibility**= The state or fact of being accountable or to blame for something. It is about a stakeholder mentality and its starts with you.



❖ **Diligence**= A constant and earnest effort to accomplish what is undertaken; persistent exertion of body or mind.



❖ **Sacrifice**= It is an act of engaging in an extra efforts in order to get the best from a task.





❑ Student Council in Landmark



The LUSC is the zenith (apex) student leadership body in the University charged with responsibilities to serve as the Management eye in driving the Vision, Mission, and Core Value of the University.



THE ROLE OF LUSC IN DRIVING THE VISION, MISSION, AND CORE VALUES OF LANDMARK UNIVERSITY TOWARDS STUDENTS' EMBRACEMENT OF LMU CULTURE



- ❑ To serve as a link between the University Management and the students.
- ❑ Monitoring the implementation of University rules and regulations.
- ❑ Encourage innovative ideas and establish a campus public opinion system where healthy students can voice their opinions.
- ❑ To promote the vision and mission of Landmark and recommend reviews of the Student Handbook where necessary for Management's consideration.





- To provide unbiased leadership to all students. This is your primary responsibility.
- To provide unbiased judgment when you must decide between two unlikely situations.
- To advance the cause of student leadership through innovative solutions to existing and emerging student challenges.
- To remain guided by the core values.
- To run agrarian-based projects.
- Adhering to the university's rules and policies





- Actively participating in school activities
- To become a role model for other students.



CULTURE



BELIEVE



PRACTICE



DEFINITION



IDENTITY





Doing it
together



Your
individual
strength



Outstanding
Success



A Forest = Many trees; Not a tree



"WE CAN DO IT TOGETHER"



Let me leave you with this quote:

□ The challenge of leadership is to be:

strong, but not rude;

kind, but not weak;

be bold, but not bully;

be thoughtful, but not lazy;

be humble, but not timid; be proud, but not arrogant;

have humorous, but without folly.

.....**Jim Rohn.**





Accountability

+

Responsibility

Defines your

integrity

You are welcome to



LANDMARK UNIVERSITY



The Lord has brought us into the good land and the LAND SHALL YIELD.... Deu 8:7-10

“Thank You”



Breaking New Grounds

.....The Lord has brought us into the good Land and the LAND SHALL YIELD.... DEUT. 8: 7-10